

Year 7 Settling In Evening



The Oakwood
Academy





Working together to support your child



- Introduction to the Evening
- Culture, Rewards and Sanctions
- The Pastoral System
- Attendance and Punctuality
- Class Charts
- The Curriculum
- DEAR and Accelerated Reader
- Assessment, Parents Evening and Tutor Reviews
- Teaching and Learning at Oakwood including Homework
- Personal Development
- Co-curricular programme
- Key Dates
- Questions and feedback



Staff introductions

- **Mr Wylie and Ms Byrne** –Deputy Head Teachers
- **Mr Rochester, Miss Crane, Mr McNeill and Mrs Lake** – Assistant Head Teachers
- **Mr Brooke, Mrs Cooke, Mr Blundell and Mrs Pettifor** – Heads of House



Welcome to The Oakwood Academy



- Committed to **all** students realising their potential
- Providing an inclusive education
- The highest expectations of all students
- Dedicated pastoral care
- Developing the whole child
- Working in partnership with Parents and Carers



The Pastoral System

House System



- Vertical Tutor Groups
- House activities and competitions
- Small tutor groups
- Tutor Review Meetings
- **Knowing every student**



Role of the tutor



- Keep in touch with us!
- **The tutor is always the first point of contact at school.**
- 0115 9539353
- admin@oakwoodacademy.org.uk
- 'Contact us' form on the school website



The Oakwood Student



The Oakwood
Academy

We have high expectations of **all** of our students.

We share this through our **OAKWOOD Student model**

- Conversations
- Rewards
- Sanctions

OAKWOOD STUDENTS ARE...

O **ON TIME**
Students are on school site for 8:40am and in classrooms by 8:45am. Oakwood students attend school each day and are always on time for lessons.

A **ACHIEVING HIGHLY**
Students are achieving target grades in assessments and are successful in school events and activities, sports teams, house competitions and earning house points.

K **KIND**
Oakwood students are kind to others both in and out of school. They are respectful to staff at all times and promote a positive behaviour culture around school and in the community.

W **WORKING HARD**
Oakwood students work hard, try their best in all lessons, enthusiastically engage in all support and tutor sessions and support peers in their learning.

O **ORGANISED**
Students always wear the correct school uniform and bring the correct PE kit and relevant equipment to all lessons. They always have their timetable, reading book and uniform card to hand.

O **OPPORTUNISTIC**
Students at our school participate in extra-curricular activities, achieve Pledge awards and engage in all aspects of school life including Leadership, Oakwood Plus and visits.

D **DRIVEN**
Students should show Democratic communication, are Responsible for their actions, practice Independence in their learning, express positive Values and demonstrate Equality in the way they treat others.



Expectations and Sanctions



What do the consequences of not following the expectations and rules within our Oakwood culture look like?

- A conversation with the teacher
- ClassChart Negative
- Same Day after school detention
- On Call
- A phone call home/meeting
- Time Out
- Suspension



Expectations and Sanctions



Why do we want to have a clear Oakwood Culture?

- Having clear routines and expectations maximises our learning time
- More learning time = better outcomes for everyone
- We want a happy, healthy, and focussed school where all staff and students can thrive
- Moving around our school site safely and purposefully means that every minute of learning time is optimised
- Our students know that when they put their Oakwood uniform on they are part of the Oakwood Academy Community. They have a shared purpose of demonstrating our 7 Oakwood attributes to everyone through the **Oakwood Student at all times.**



Attendance



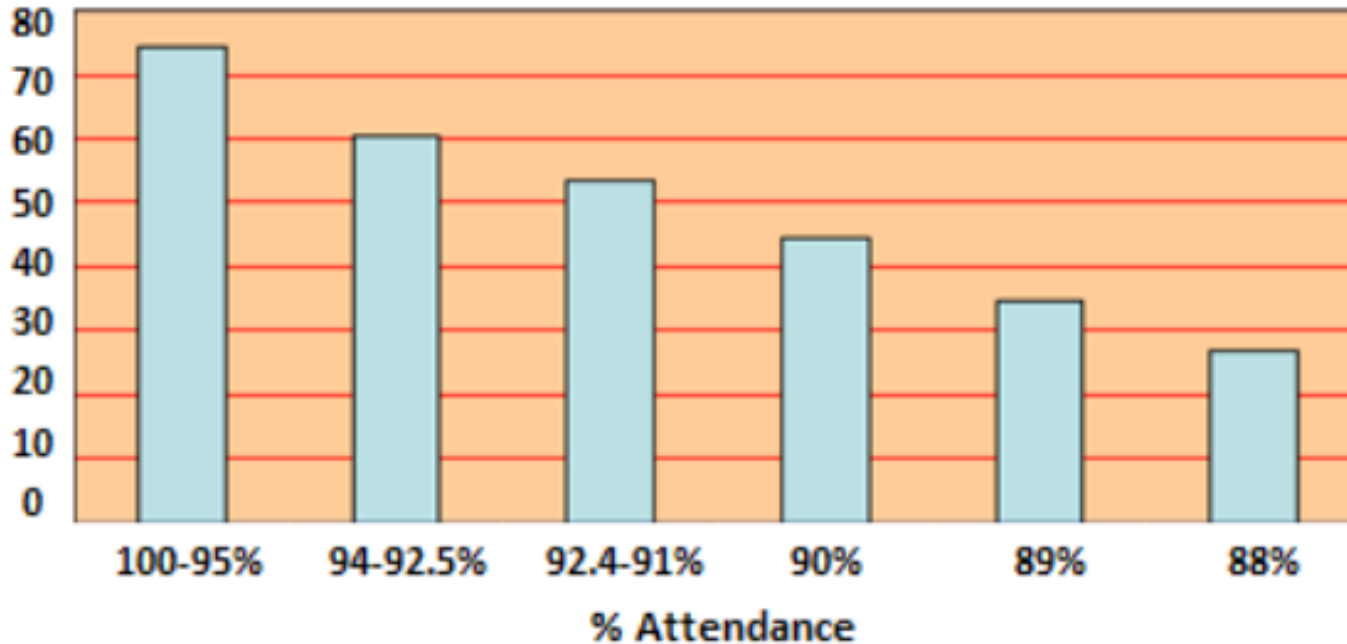
- 365 days per year
- 190 school days
- 175 days off!



Attendance

Attendance and Progress: The link...

Chances of success at GCSE





Understanding Attendance

0 days off school in a year 0 lessons missed	100%	Perfect attendance
2 days off school in a year 10 lessons missed	99%	Excellent attendance
5 days off school in a year 25 lessons missed	97%	Good attendance
10 days off school in a year 50 lessons missed	95%	Slightly below average attendance
14 days off school in a year 70 lessons missed	93%	Poor attendance
20 days off school in a year 100 lessons missed	90%	Very poor attendance

Our target for all pupils is a minimum of 97%



Punctuality

Students must be on site from 8.40am

Lesson 1 starts at 8.45am

Students arriving late will receive a negative point

We will not accept excuses for poor punctuality

MINUTES LATE	IMPACT ON YOUR ATTENDANCE IN A YEAR
5 MINUTES A DAY =	3.4 days 98.4% attendance
10 MINUTES A DAY =	6.9 days 97.6% attendance
15 MINUTES A DAY =	10.3 days 94.6% attendance
20 MINUTES A DAY =	13.8 days 92.9% attendance
30 MINUTES A DAY =	20.7 days 89.2% attendance





Site opening and Breakfast Club

Students can arrive on site from 8am (NO EARLIER)

Breakfast club takes place every day between 8am and 8:35am in the dining room

Free breakfast available each day for all students

Family activities | National School Breakfast Programme

The Oakwood Academy

DID YOU KNOW?

Research has proven that students who regularly eat breakfast do better in their GCSEs

A healthy breakfast can improve your mood

Eating in the morning helps you start the day with more energy

*condiments available for a small extra cost

FREE Breakfast FOR ALL STUDENTS

available from 8 - 8.40am in the Main Hall

(from 9 January 2023 until the end of the school year!)



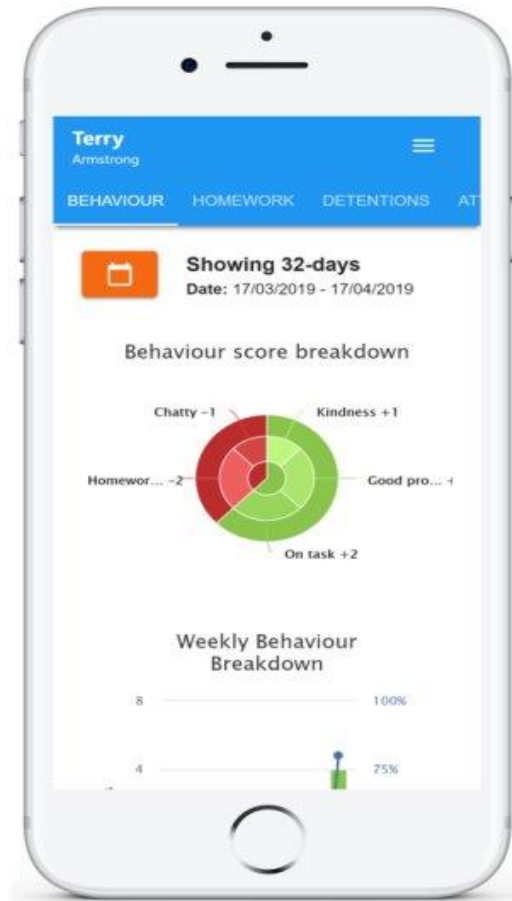


Class Charts

Thank you for those who have logged in so far.

What can Class Charts tell you?

- Your child's homework.
- Key announcements, including letters.
- Child's behaviour record (Positives, Negatives and Detentions)
- Timetable





Our Curriculum

- **All students study** English, Maths, Science, History, Geography, RE, French, Design, Food, Drama, Music, Art, PE, ICT through years 7, 8, 9.
- **All students take part in** Personal Development, Tutor Time, Assemblies, Curriculum+ (after school) clubs.
- **Students choose their GCSE options** during Year 9 ready to start courses in Year 10.



www.oakwoodacademy.org.uk

HOME → STUDENTS → CURRICULUM

In This Section

Assertive Mentoring

Curriculum Maps

Curriculum Plus

Exam Information

Options

Personal Development

Redhill Sixth Form

Revision Central

SEND Information

Year 11 P6 Programme

Curriculum

Our curriculum vision is for all of our students to have high aspirations, and to be confident, independent and resilient individuals. They will achieve excellence and become life-long learners, well-prepared for the modern workplace. This will lead them to be responsible, respectful and active citizens who can make a positive contribution to society. Our curriculum vision is underpinned by our school ethos of the 'Oakwood' Student.

Our curriculum is changing from September 2022. This is explained in our 2024-25 curriculum policy.

Curriculum Plus Activities

We strongly believe that the school day does not finish at 3pm, and we encourage all students to take part in our co-curricular programme. These activities continue to allow students to enjoy and achieve, as well as building further on our school ethos of the Oakwood Student. To view our Curriculum Plus programme, [click here](#).

Option Choices

Our options process supports students in making informed choices about the next stage of their education, and helps them to start thinking about future education, careers and training. The options process takes place in the Spring and Summer term of Year 9, with students starting courses in September of Year 10. For further details of our Options process [click here](#).

SEND Curriculum Adaptations

At The Oakwood Academy, all students benefit from quality first teaching in the classroom, which caters for their individual needs and supports them



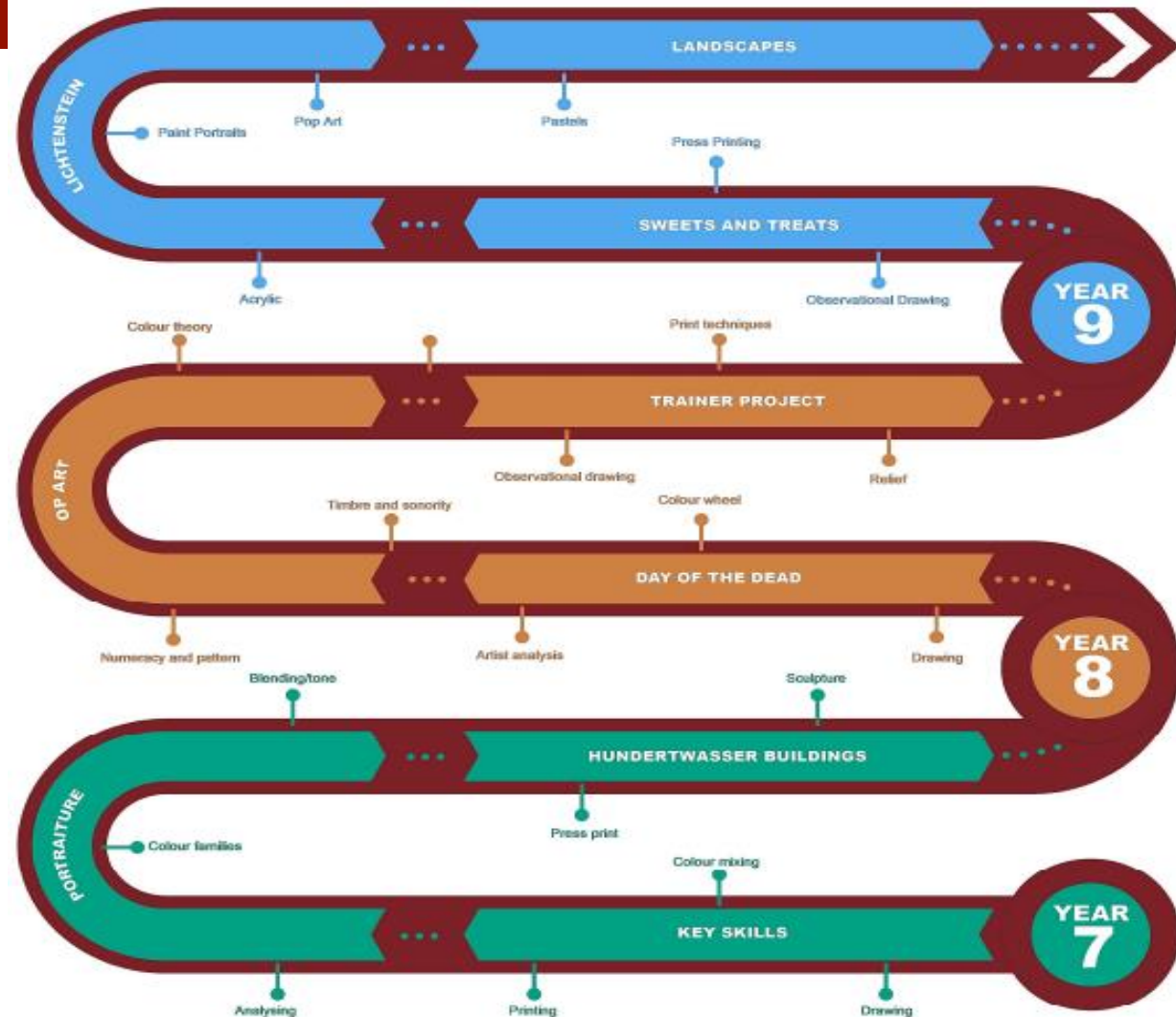


KEY STAGE 3 CURRICULUM PATHWAY

Curriculum Maps

Key Stage 3

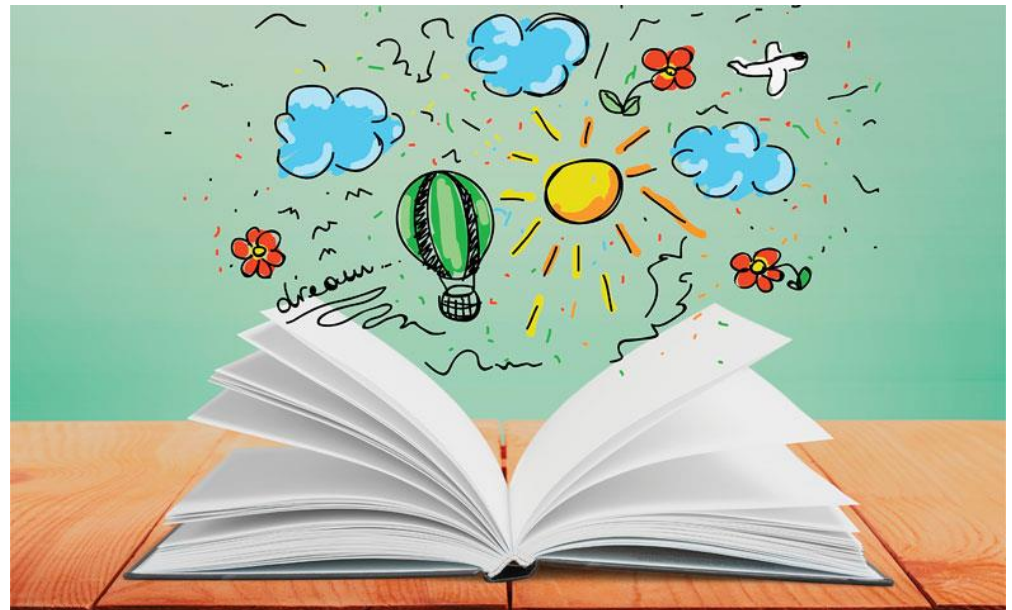
-  Art
-  Computing
-  Drama
-  DT
-  English
-  French
-  Food and Textiles
-  Geography
-  History





DEAR (Drop Everything and Read)

- Daily reading time
- Every day with Years 7 to 9
- Reading at home





Accelerated Reader

- Reading tests taken during the first 3 weeks here.
- Students given a reading range – all books in the Library are labelled with this information.
- Book quizzes are taken after completing a book.
- Reading at home makes a huge difference
- Getting your child to read out loud to you for 15 minutes / 1 chapter as often as you can.





Year 7 Settling-in Evening

Our Library





Assessment

- GCSE grading changed from letters to numbers several years ago
- Throughout students' time at Oakwood, we assess their progress based on targets generated using their prior attainment in their SATs
- At KS3, students are given a target band
- At KS4 students are given a target grade

Current grading structure	Old grading structure
9	A*
8	A
7	B
6	C
5	D
4	E
3	F
2	G
1	U
U	U





Understanding bands and grades

Years 7, 8 and 9

- Five bands based on set criteria for each subject
- Based on a teacher prediction of what the student will achieve at the end of Year 11

Predicted End of Year 11 Band	Explanation of band
A	Likely to achieve grades 8-9 at the end of Year 11
B	Likely to achieve grades 6-7 at the end of Year 11
C	Likely to achieve grades 4-5 at the end of Year 11
D	Likely to achieve grades 2-3 at the end of Year 11
E	Likely to achieve grades 1 or below at the end of Year 11

Years 10 and 11

- Numeric GCSEs
- Grade 4 = standard pass (bottom of old grade C)
- Grade 5 = strong pass (top of old grade C)



Reports

- Reports are issued twice in Year 7 (December and April) and then once in Years 8 & 9
- Year 7 have an exam week w/c 17 March assessing their progress on everything learnt so far
- Reports show progress for the year compared to target band
- These are issue before parents evening, enabling you to discuss with subject teachers

Attendance: 96.4%		Initial Assessment %	Class Average Assessment %	Target Band	Predicted Bands		Subject Targets
Subject	Set				DC1 Dec 24	DC2 Apr 25	
Art	M	44	55	C			
Design	M	60	54	C			
Drama	7a/En3	46	42	C			
English	M	50	54	C			
Geography	M	80	64	C			
History	M	64	63	C			
ICT	M	77	54	C			
Maths	7a/Ma2	62	64	C			
Music	M	45	53	C			
Science	7a/Sc2	70	62	C			
Spanish	M	41	56	C			
Core PE	7a/Pe3	Secure					

	Year 7 Baseline	Year 7 Summer	Year 8 Spring	Year 9 Summer
Reading Age	10 Years 7 Months			

Key

Set	Students are placed into sets based on their academic ability in a particular subject. Set 1 is the highest. M – Mixed ability groups
Assessment %	Students' results are based on a summative test set by the department and teacher
Class Average Assessment %	The average percentage based on ALL of the students who have sat the same assessment in classes across the year group.
Target band	Students have a target generated based on national average data from their KS2 assessments. Please read the banding descriptions on the following pages for more detail.
DC	A predicted band made by the classroom teacher based on what the students is likely to achieve in that subject in the future.



Parents evenings & Tutor reviews

- Parents have the opportunity to meet teachers twice per year:
 - Tutor review (16 January) – tutors meet with parents to discuss your child's pastoral development and set agreed targets for the year ahead. School closes at 2pm on tutor review days.
 - Parents evening (13 May) – an opportunity to speak to your child's subject teachers about their progress (reports are issued before this event).
 - Appointments run from 4-7pm in the main hall. Appointments are booked via an online system which you will be given access to nearer the time.



Teaching and Learning

Expert teachers at Oakwood Academy who strive for excellence. Regular Teacher Training to keep up with the most up to date teaching ideas.

Structure of lessons is based on our Teaching Fundamentals -

- Do Now
- Questioning
- Modelling
- Checking for Understanding
- Learning Intentions

QUALITY FIRST TEACHING



We encourage all our teachers to:

- Take risks and allow your child to engage and be expressive in their learning.
- Ensure that a range of techniques are used to challenge all students (Reading, Writing, Listening and Oracy).
- To provide chances for your child to go out of their comfort zone and to build academic resilience as they progress throughout Oakwood.
- Provide Outstanding Teaching for all with the mindset of "Every lesson counts"
- Not accept any low-level disruption – Teaching and Learning is integral to everything we do



How can parents help us and your child?



- Value learning and encourage their child as a learner.
- Make sure their child is ready and able to learn everyday.
- Support good attendance to allow them to access strong Teaching.
- Participate in discussions about their child's progress and attainment – ask them about their day and their lessons.
- Communicate with the school to share information promptly to help us with the Teaching of their child.
- Encourage their child to take responsibility for their own learning.



THE OAKWOOD WAY...

OAKWOOD BEST...

- ✓ Sit up straight
- ✓ Silence
- ✓ Pens down
- ✓ Face the teacher
- ✓ Listening

OAKWOOD CLASSROOM...



Talking

OR



Silence

OAKWOOD FINAL FIVE...

- ✓ Tidy away
- ✓ Uniform check
- ✓ Check next lesson
- ✓ Learning review



Homework and how to support



Homework will look very different in comparison to Primary School.

- **Please use Class Charts to keep up to date with the Homework that your child is set**
- Check at the end of every evening and complete that day where possible. This will allow structure and organisation
- Check the quality of your child's Homework and ensure that they have attempted the homework to the best of their ability - ensure they are proud of the completed work
- Clear time expectations in the evening to ensure structured time for your child to complete Homework.
- Develop an area of study to allow equipment and homework is able to be stored and completed in a tidy area.
- If they do not understand the Homework, encourage them to speak to a teacher to get the support required.



Personal Development



Personal Development Period (PDP)

- All students take part in RSHE lessons for one hour every three weeks, known as the Personal Development Period (PDP).
- These are age-related sessions that allow specific content to be delivered effectively.

House competitions

- There are 17 different house competitions throughout the year

DofE award

- Bronze award (for those in Year 9 and over)
- Silver award (for those in Year 10 and over)
- Gold award (for those 16 and over)

Careers

- Part of tutor time and assembly plan
- Every week we have a 'Career of the week' which will be on the website every week

'Widening Experiences'



Co-Curricular Programme

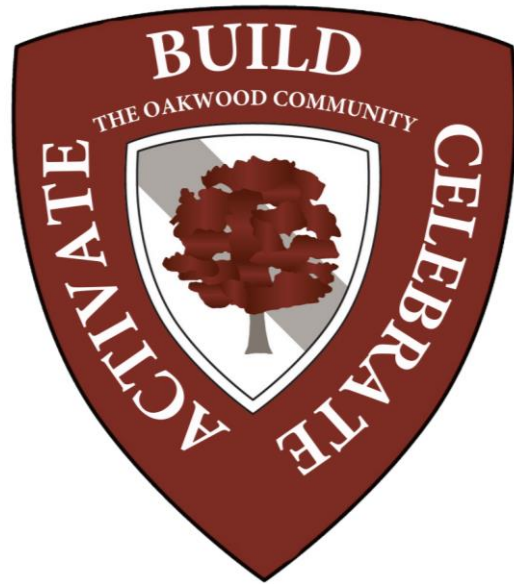
Monday	Tuesday	Wednesday	Thursday	Friday
Handball 3:10-4:10pm Sports Hall	UNO Club (Y7&8) Lunchtime B103	Bee Creative 3:10-4:10pm Zone	Science STEM 3:10-4:10pm B004	PRIDE Group Lunchtime B106
		Football Academy (Y9-11) 3:10-4:10pm Field	Netball Academy (Y9-11) 3:10-4:10pm Sports Hall	
		Netball Academy (Y7&8) 3:10-4:10pm Sports Hall	Football Academy (Y7&8) 3:10-4:10pm Field	
		Cyber first 3:10-4:10pm B005	Couch to 5k All year 3:10-4:10pm Bestwood Lodge	
			UNO Club (Y9-11) Lunchtime B103	
			D of E 3:10-4:10pm B107	
			KS3 Creativity Club 3:10-4:10pm A001	



Year 7 Settling-in Evening



The Oakwood Community





Key dates in Year 7



- INSET days- school closed all day -
 - 27th Sept, 2nd Dec and 27th June
- 2:10pm school closures (Tutor Reviews) -
 - 30th Sept, 15th Oct, 27th Nov, 16th Jan, 24th Jan.
- Y7 Parents Evening – 13th May
- Y7 Exam week – w/c 17th March

All term dates are on the Oakwood Academy website



Senior Leaders and Heads of House will be available for any questions you might have.